

エバラSRTE型片吸込ターボファン  
EBARA SINGLE SUCTION TURBO FAN

極 数 4P  
POLE

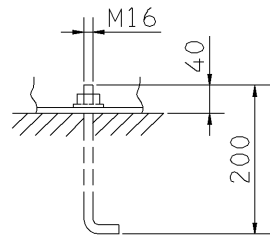
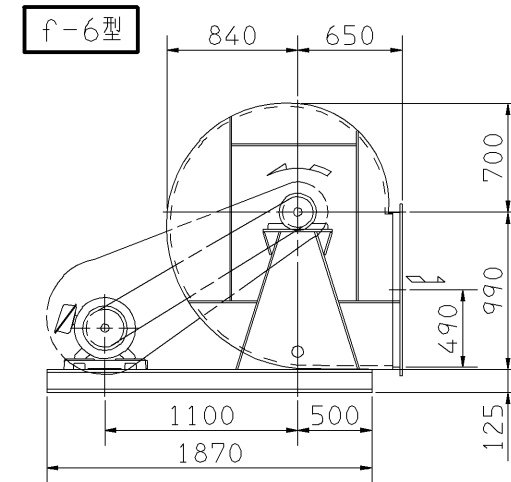
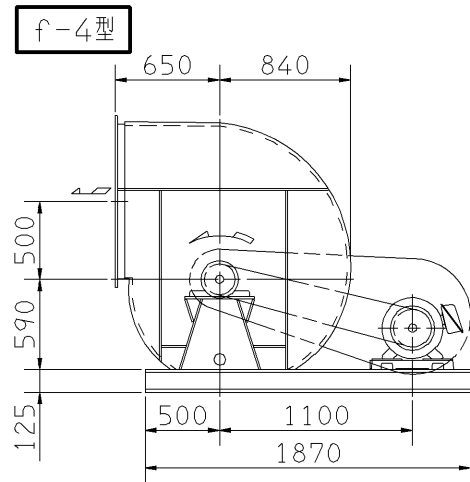
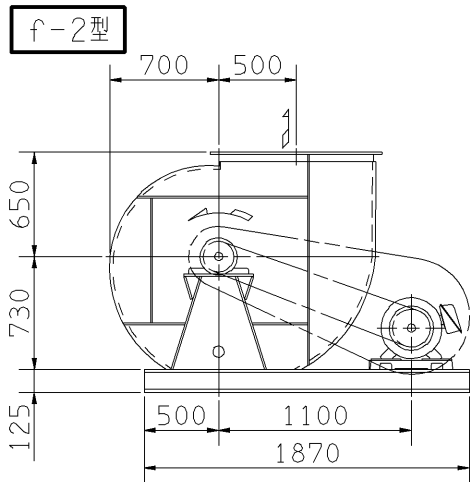
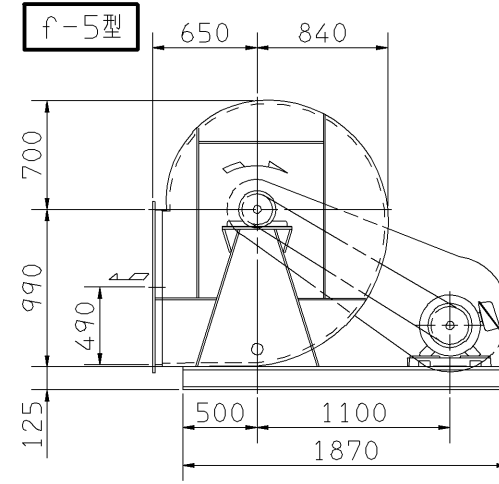
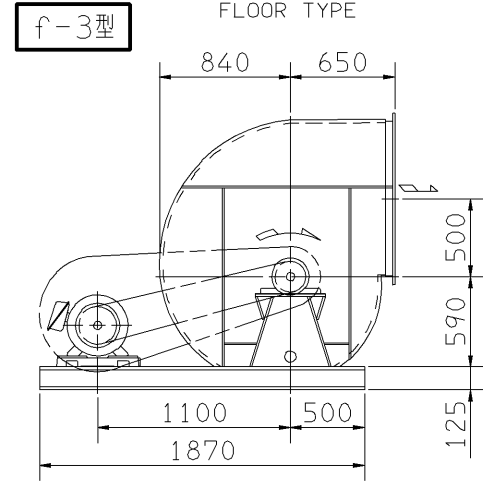
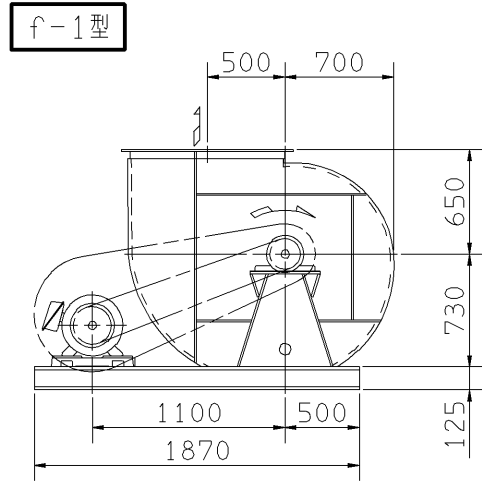
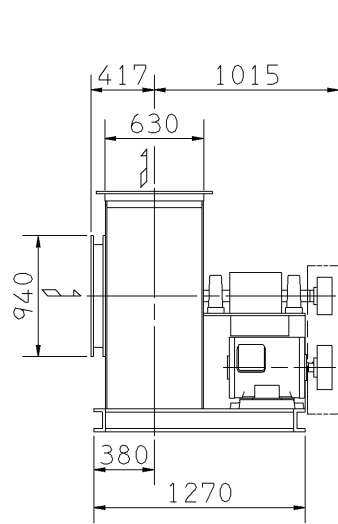
外形寸法図  
DIMENSIONS

機 名 MODEL 6SRTE

周波数 FREQUENCY 50 Hz

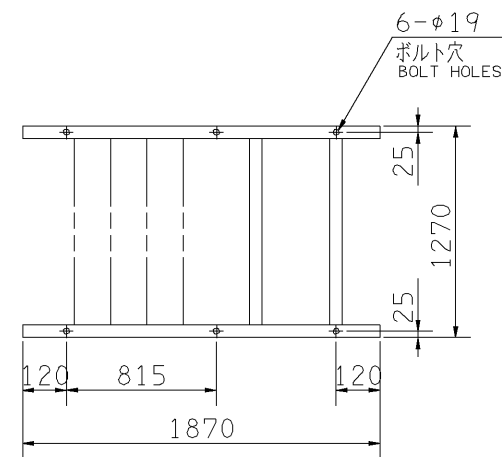
注) 1. 本図は、駆動側(プーリ側)より見た図です。  
NOTE DRAWING SHOWS THE DIMENSIONS VIEWED FROM PULLEY SIDE.  
2. 機器の取付け、配管等は取扱説明書を参照してください。  
FOR INSTALLATION PLEASE REFER INSTRUCTION MANUAL.

床置形  
FLOOR TYPE



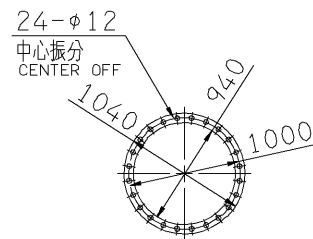
推奨基礎ボルト  
RECOMMENDABLE  
ANCHOR BOLT

基礎ボルトは付属いたしません。  
ANCHOR BOLTS ARE OUT OF SUPPLY.



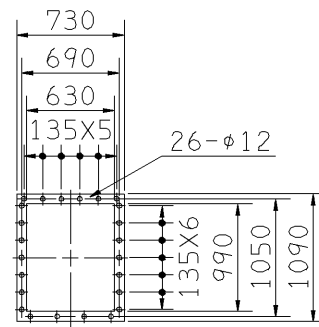
基礎図

FOUNDATION PLAN



板厚: t=3.2  
THICKNESS

吸込フランジ  
SUCTION FLANGE



板厚: t=4.0  
THICKNESS

吐出しフランジ  
DISCHARGE FLANGE

| 出力<br>OUTPUT<br>kW | 回転速度<br>SPEED<br>min <sup>-1</sup> | Vプーリ組合せ<br>V PULLEY   |                     | Vベルト<br>V BELT |            |            | 概略<br>質量<br>MASS<br>kg |      |     |
|--------------------|------------------------------------|-----------------------|---------------------|----------------|------------|------------|------------------------|------|-----|
|                    |                                    | 電動機側<br>MOTOR<br>SIDE | ファン側<br>FAN<br>SIDE | 呼称(号)<br>SIZE  |            |            |                        |      |     |
|                    |                                    |                       |                     | f-1<br>f-2     | f-3<br>f-4 | f-5<br>f-6 |                        |      |     |
| 5.5                | 700                                | 120                   | 250                 | 3V             | 3          | 1180       | 1180                   | 1320 | 806 |
|                    | 750                                | 120                   | 236                 | 3V             | 3          | 1180       | 1120                   | 1320 |     |
| 7.5                | 820                                | 125                   | 224                 | 3V             | 3          | 1180       | 1120                   | 1320 | 807 |
|                    | 860                                | 140                   | 236                 | 3V             | 3          | 1180       | 1180                   | 1320 |     |
| 11                 | 900                                | 130                   | 212                 | 3V             | 3          | 1180       | 1120                   | 1250 | 831 |
|                    | 950                                | 150                   | 230                 | 5V             | 3          | 1180       | 1180                   | 1320 |     |
| 15                 | 1020                               | 160                   | 230                 | 5V             | 3          | 1180       | 1180                   | 1320 | 856 |
|                    | 1060                               | 190                   | 260                 | 5V             | 3          | 1250       | 1180                   | 1320 |     |
| 18.5               | 1140                               | 180                   | 230                 | 5V             | 3          | 1180       | 1180                   | 1320 | 868 |
|                    | 1220                               | 190                   | 230                 | 5V             | 3          | 1180       | 1180                   | 1320 |     |
| 30                 | 1300                               | 230                   | 260                 | 5V             | 3          | 1250       | 1180                   | 1320 | 929 |
|                    | 1350                               | 212                   | 230                 | 5V             | 3          | 1250       | 1180                   | 1320 |     |
| 37                 | 1425                               | 230                   | 236                 | 5V             | 3          | 1250       | 1180                   | 1320 | 951 |
|                    | 1520                               | 240                   | 230                 | 5V             | 3          | 1250       | 1180                   | 1320 |     |
| 45                 | 1590                               | 250                   | 230                 | 5V             | 3          | 1250       | 1180                   | 1320 | 966 |

| 附属品<br>ACCESSORIES |                                       | 特別附属品<br>SPECIAL ACCESSORIES |                           | 電動機<br>MOTOR |         | 特殊仕様<br>SPECIAL SPEC. |  |
|--------------------|---------------------------------------|------------------------------|---------------------------|--------------|---------|-----------------------|--|
| 1                  | 軸受(駆動側) UCP314<br>BG (PULLEY SIDE)    | 8                            | 相フランジ<br>COMPANION FLANGE | 1            | 周波数 Hz  | Hz                    |  |
| 2                  | 軸受(反駆動側) UCP314<br>BG (OPPOSITE SIDE) | 9                            |                           | 2            | 電圧 V    | V                     |  |
| 3                  | 軸ガード<br>SHAFT GUARD                   | 10                           |                           | 3            | 出力 kW   | kW                    |  |
| 4                  | Vプーリ<br>V PULLEY                      | 11                           |                           | 4            | 形式 TYPE |                       |  |
| 5                  | Vベルト<br>V BELT                        | 12                           |                           | 5            | メーカー    |                       |  |
| 6                  | Vベルトガード<br>V BELT GUARD               | 13                           |                           | 6            |         |                       |  |
| 7                  | 共通ベース<br>COMMON BASE                  | 14                           |                           | 7            |         |                       |  |

|                  |                  |                                 |                   |
|------------------|------------------|---------------------------------|-------------------|
| 御注文主<br>CUSTOMER | 機器番号<br>ITEM NO. | 御使用先<br>FINAL USER              | 機器名称<br>ITEM NAME |
| 荏原製番 SER.NO.     | 機名 MODEL         | 風量 CAPACITY                     | 静圧 STATIC PRESS.  |
|                  |                  | 回転速度 SPEED<br>min <sup>-1</sup> | 出力 OUTPUT         |
|                  |                  |                                 | 数量 Q'TY           |

図番 DWG.NO. Z6SRTE5AF 000

Z6SRTE5AF

